



HELLENIC REPUBLIC  
Ministry of Labour  
and Social Insurance

Unit of Experts in Employment,  
Social Insurance, Welfare and  
Social Affairs (M.E.K.Y.)



Mechanism  
of Labour  
Market Diagnosis

ELSTAT: The labour market in Greece (2015-2022)  
**Unemployment by previous occupation**

USER GUIDE FOR THE DASHBOARD

**Unemployment by previous occupation  
and level of education**

e3



## Table of Contents

<b>The website of Mechanism of Labour Market Diagnosis.....</b>	<b>4</b>
<b>General functions of interactive tables (dashboards) .....</b>	<b>11</b>
Select graph.....	11
Analysis specialization .....	12
<i>Filter selection</i> .....	12
<i>Highlight field</i> .....	14
Main functions of interactive tables .....	15
<i>Classification of data</i> .....	15
<i>Multiple data selection</i> .....	15
<i>Popup bar of options</i> .....	16
<i>Tooltip</i> .....	16
Additional functions .....	17
<i>Color chart Legend</i> .....	17
<i>Download Excel file</i> .....	17
<i>Metadata</i> .....	18
<i>Back</i> .....	18
<i>Tableau Options Bar</i> .....	18
<b>Interactive table overview:</b>	
<b>e3. Unemployment by previous occupation and level of education .....</b>	<b>20</b>
Persons unemployed by level of education .....	20
Persons unemployed by year .....	21
Persons unemployed by previous occupation (1st level of classification) and level of education .....	22
Persons unemployed by previous occupation (2nd level of classification) and level of education .....	23
Percentage (%) of persons unemployed by year and level of education.....	24



## Figure Table

Figure 1. Home Page of Mechanism of Labour Market Diagnosis .....	4
Figure 2. Main options menu .....	4
Figure 3. Direct access to a thematic unit from the Home page.....	5
Figure 4. Search field for published analyses .....	5
Figure 5. Option to type in the Search field .....	5
Figure 6. Thematic unit Home page: Contents of all categories .....	6
Figure 7. Search filters.....	6
Figure 8. Navigation bar in the categories of the thematic section .....	7
Figure 9. Data category contents by publication source (thumbnails) .....	7
Figure 10. Working environment of Interactive table.....	8
Figure 11. Working environment of Interactive table: User guide and Description of the interactive tables .....	8
Figure 12. Working environment of Interactive table: Table information and direct access to Related data .....	9
Figure 13. Evaluation and comments form of Interactive tables.....	9
Figure 14. Direct access to the Tableau Public repository .....	10
Figure 15. Members access .....	10
Figure 16. Select graph .....	11
Figure 17. Select graph and other analysis visualizations .....	11
Figure 18. Analysis specialization options (using filters).....	12
Figure 19. Combined use of filters .....	13
Figure 20. Option to include or exclude filter values .....	13
Figure 21. Reset filters to their original state.....	13
Figure 22. Highlight field .....	14
Figure 23. Data sorting options .....	15
Figure 24. Option to multi-select data (Shortcut) .....	15
Figure 25. Pop up bar of options .....	16
Figure 26. Tooltip.....	16
Figure 27. Color chart legend (legend) .....	17
Figure 28. Download Excel file .....	17
Figure 29. Metadata pop-up menu .....	18
Figure 30. Back (to previous menu).....	18
Figure 31. Options bar Tableau .....	18
Figure 32. Share pop-up window (Share) dashboard.....	19
Figure 33. Download pop-up window (Download) .....	19
Figure 34. Persons unemployed by level of education .....	20
Figure 35. Persons unemployed by year .....	21
Figure 36. Persons unemployed by previous occupation (1st level of classification) and level of education .....	22
Figure 37. Persons unemployed by previous occupation (2nd level of classification) and level of education .....	23
Figure 38. Percentage (%) of persons unemployed by year and level of education.....	24



## The website of Mechanism of Labour Market Diagnosis

All the interactive tables are posted on the **Mechanism of Labour Market Diagnosis** website: <https://mdae.gr/> and are accessible to website visitors (Desktop version) through the main options menu and the thematic categories that are being developed.

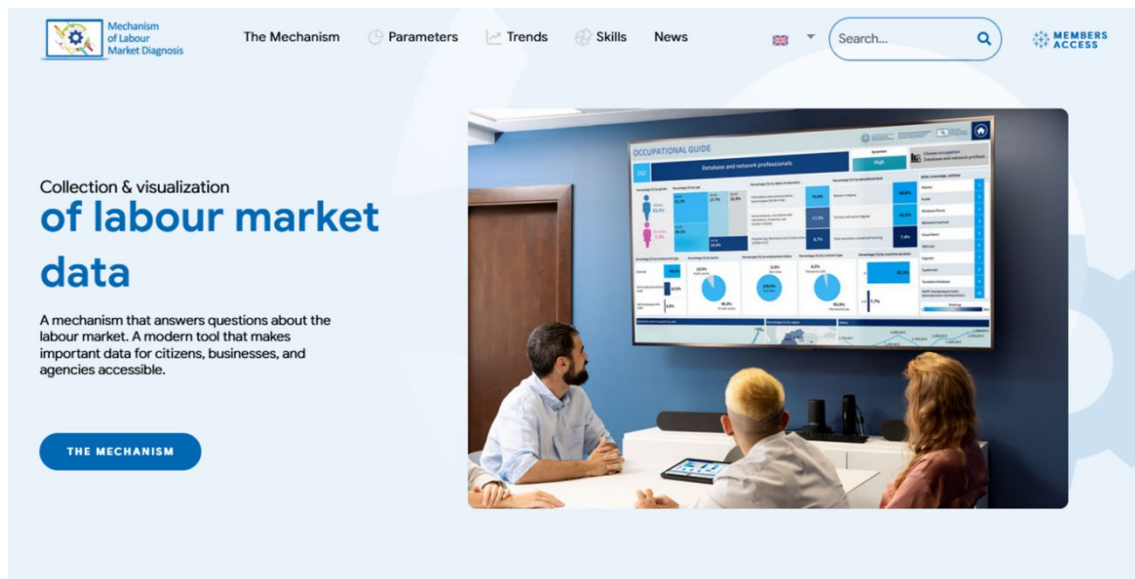


Figure 1. Home Page of Mechanism of Labour Market Diagnosis

The interactive tables created with ELSTAT data for the labour market (2015-2022) are presented in the thematic unit **Parameters (labour market)**. The visitor can choose the unit and browse its contents or locate, through a drop-down menu, the categories of data per publication source.

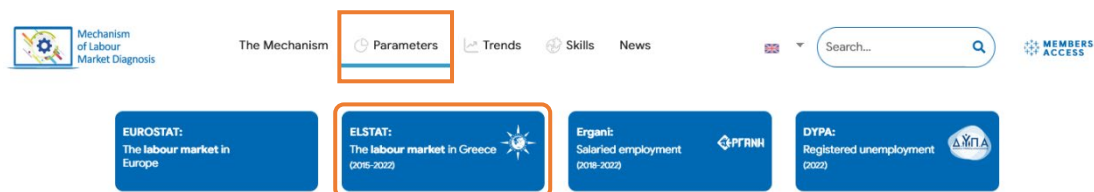


Figure 2. Main options menu

Alternatively, direct access to the thematic unit is also given on the Mechanism of Labour Market Diagnosis Home page.



Figure 3. Direct access to a thematic unit from the Home page

In any case, from any point, the user can locate the interactive table he wishes to examine through the Search field in the main menu by typing keywords linked to the title of the interactive table.



Figure 4. Search field for published analyses

For example, typing even the first letters of the word "gender" displays all the available interactive tables whose analysis refers to the variable "gender."

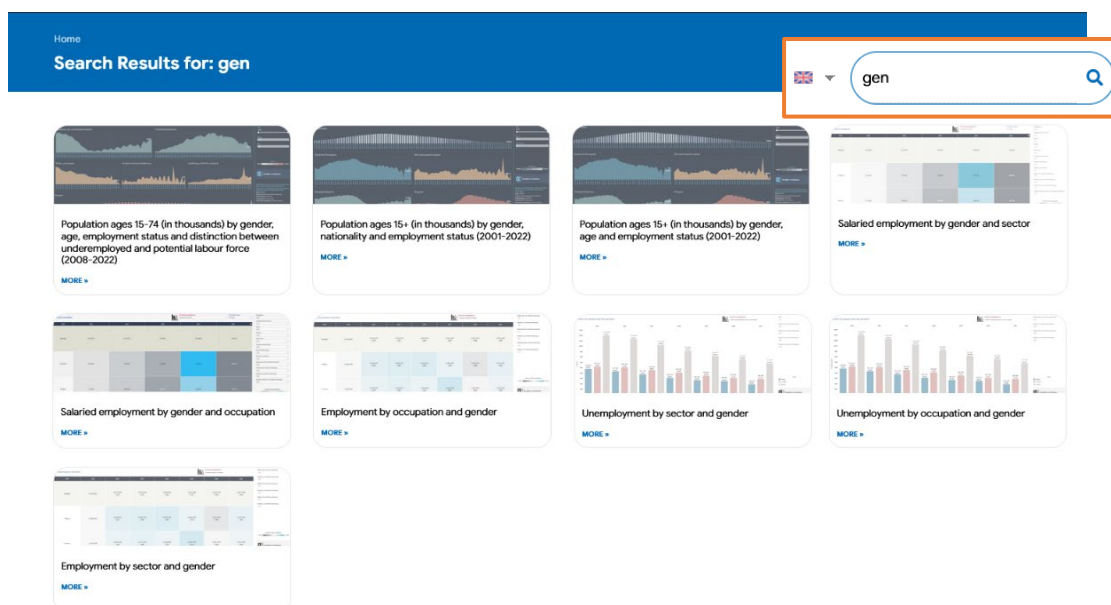


Figure 5. Option to type in the Search field



By opening the Home page of the thematic unit **Parameters (labour market)**, the Contents of all categories are displayed, and with the help of the Scroll bar, the visitor can browse through all published analyses presented as thumbnails and view their interactive tables and visualizations by selecting **MORE >**

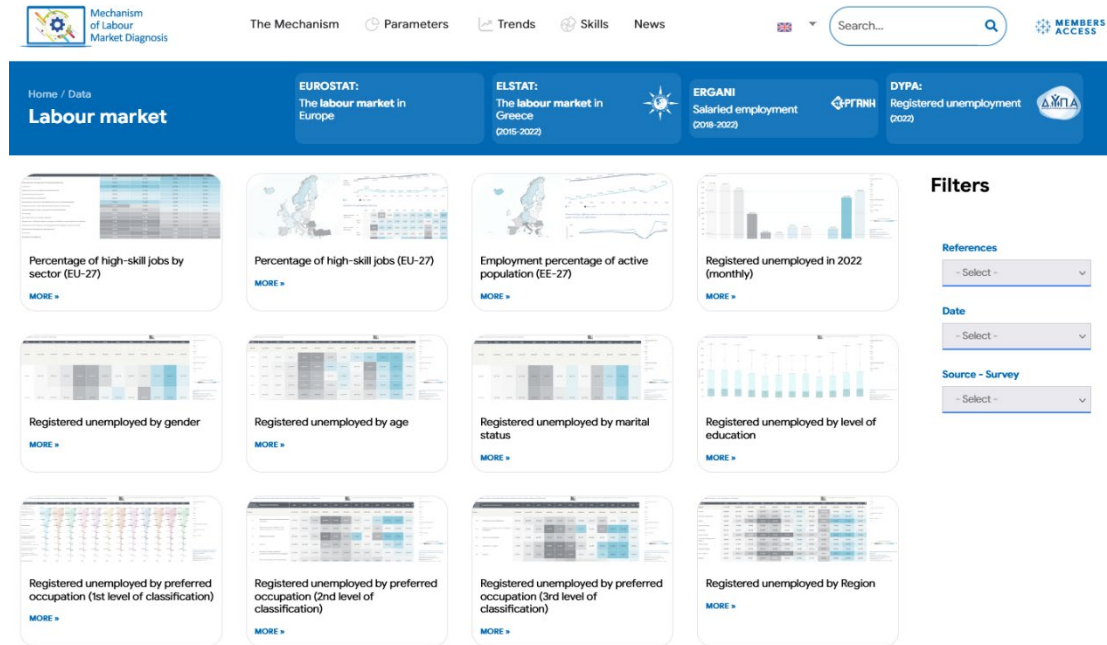


Figure 6. Thematic unit Home page: Contents of all categories

With the help of the **Filters**, the visitor can refine his search criteria and be guided more quickly to his choice based on References, Chronology and Data Sources.

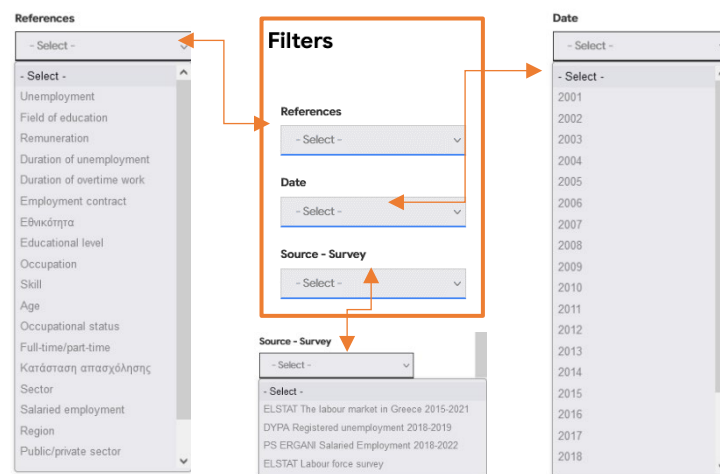


Figure 7. Search filters



In addition, it is possible to navigate to the contents of a specific category via the blue bar at the top of the screen.

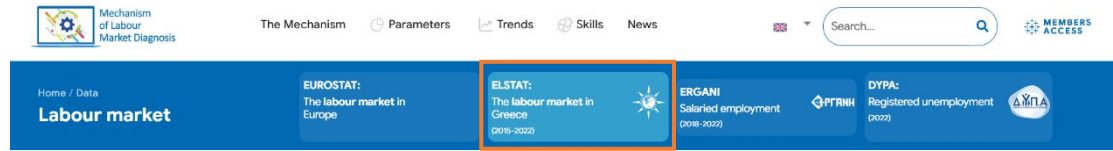


Figure 8. Navigation bar in the categories of the thematic section

Corresponding to the previous screen, the visitor can browse the contents, filter the search criteria or display the data subcategories via the navigation bar.

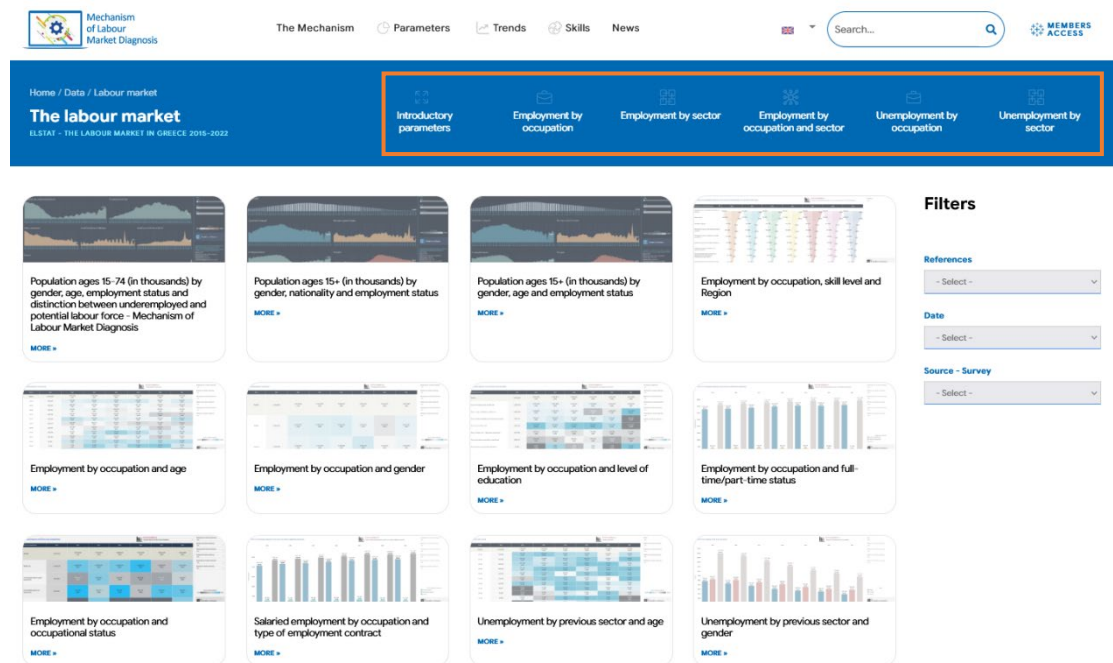


Figure 9. Data category contents by publication source (thumbnails)

After choosing the interactive table of interest, the visitor is transferred to a new **working environment**, where he can see the results of the analysis and visualization of the data created using Business Intelligence software (Tableau) based on specific variables, choose a different visualization of the data, refine the analysis through the suggested filters, download the data in an Excel file (.xls) and save its current selections in an Image file (.png), an Acrobat file (.pdf) or a PowerPoint file (.ppt), features that are discussed in the next section of the manual.

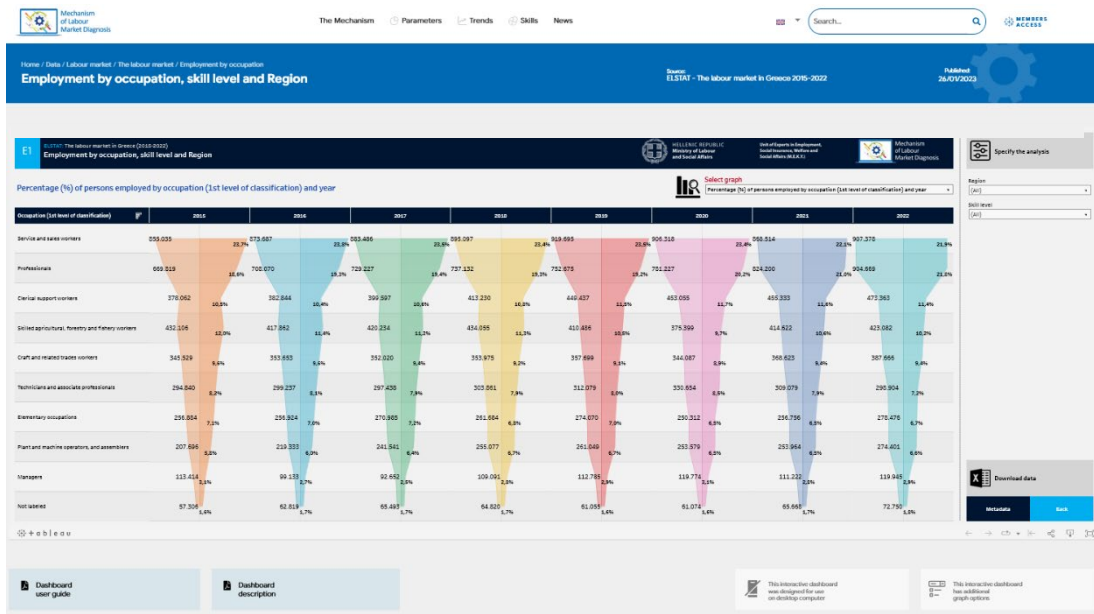


Figure 10. Working environment of Interactive table

The website visitor can also save in an Acrobat file (.pdf) the **Dashboard user guide** and the **Dashboard description**.



Figure 11. Working environment of Interactive tables: User guide and Description of the interactive tables

Table **Information** (metadata) and the ability to directly access **Related data** and relevant analyzes are given in the same working environment.



### Information

Source: ELSTAT  
Unit: Labour force survey  
Classification: ISCO-08  
Frequency: Yearly  
Last update: 2022

### Related data

- Employment by occupation and age  
[VIEW MORE >](#)
- Employment by occupation and gender  
[VIEW MORE >](#)
- Employment by occupation, level and field of education  
[VIEW MORE >](#)
- Employment by occupation and full-time/part-time status  
[VIEW MORE >](#)
- Employment by occupation and public/private sector  
[VIEW MORE >](#)
- Employment by occupation and occupational status  
[VIEW MORE >](#)

Figure 12. Working environment of Interactive table: Table information and direct access to Related data

Finally, to improve the interactive tables' data display and functionality, the visitor, through an electronic form, can evaluate the usability of the respective interactive table and fill in any comments and observations.

### Leave a comment

Fill out the form below to collect comments and observations regarding the specific data. This way we will be able to improve the visualization of the data as well as the overall user experience in the future.

**Who are you?**  
civilian

**Email**  
Your email

**How useful was the interactive dashboard for you? (0=not at all, 10=very much)**

Rating: 5 out of 10

**Comments & remarks**  
Fill in your comment here

**SEND**

Figure 13. Evaluation and comments form of Interactive tables



All interactive tables posted on the **Mechanism of Labour Market Diagnosis** website are also accessible in the Tableau Public repository. Furthermore, the visitor can be redirected directly by selecting the corresponding icon in the Tableau toolbar.



Figure 14. Direct access to the Tableau Public repository

Members of the **Mechanism of Labour Market Diagnosis** have the option of direct access to the Server of the Mechanism through the main menu of the website and the corresponding icon on the right by typing the username (e-mail) and the login code (password).



Figure 15. Members access



## General functions of interactive tables (dashboards)

Each published interactive table (dashboard) has a set of functions and tools that help to examine and understand the data analyzed each time, based on the visualizations proposed and the filters that specialize the analysis.

### Select graph

A primary function is **Select graph**. The user can choose the analysis that concerns him based on specific variables and display it on the screen using the drop-down menu and the interactive panel (dashboard) with the proposed visualization.

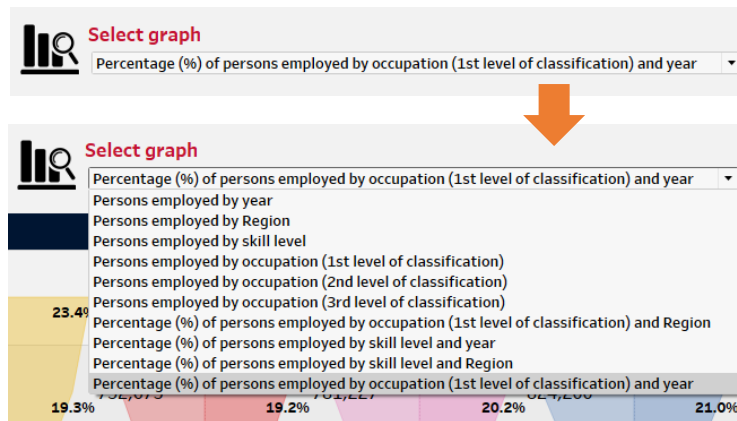


Figure 16. Select graph

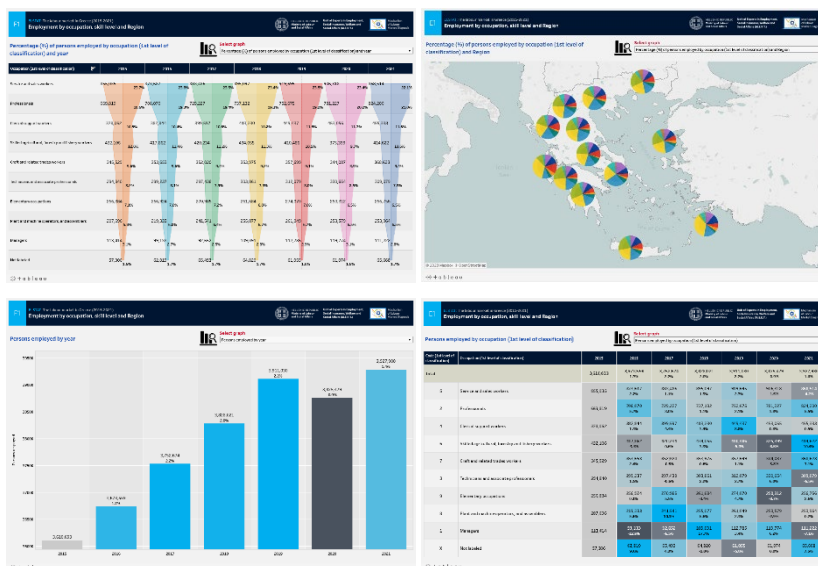


Figure 17. Select graph and other analysis visualizations

## Analysis specialization

### Filter selection

The selection filters feature in each dashboard's **Specify the analysis** section, to the right of the dashboard, allows the user to filter and display the data they want to examine, selecting one value at a time from the drop-down list of unique values (single value) or more values from the multiple value drop-down list from filters (e.g., Region). Selecting the **All** value displays all field values, while there is always the option of typing in the corresponding field of each filter for easier access, especially in long drop-down lists.

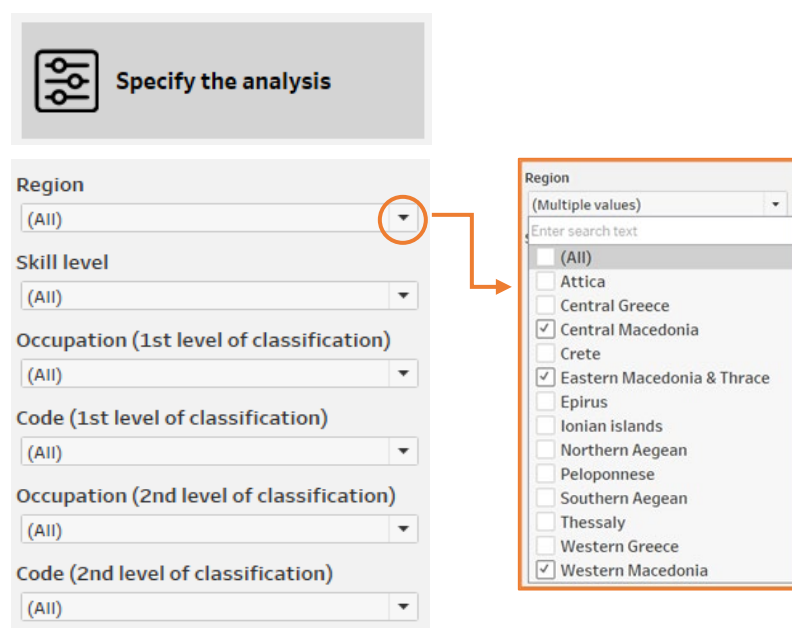


Figure 18. Analysis specialization options (using filters)

The categorization of the fields in the drop-down filter lists is done each time based on the variables that the analysis of the chosen graph examines, such as Region, Occupation and Occupation Code (1st, 2nd and 3rd level of classification - ISCO-08 classification), Age, Gender, Level of Education, Skill level, Employment Status, Sector and Sector Code (1st, 2nd and 3rd level of classification - NACE Rev. 2 classification), etc.

It is possible to combine filter options so that only the relevant values the user selects are displayed in the interactive table. So, for example, by selecting the Region of Peloponnese and the occupation Clerical support workers [Occupation (1st level of classification)], the occupation Code automatically becomes 4 and the Skill Level filter becomes Medium. In the Occupation filter (2nd level of classification), only the relevant values of the two-digit occupation breakdown are displayed. The user can further refine the breakdown by selecting one of the four values of that field: *Customer Service Clerks, General and Keyboard Clerks,*



Numerical and material recording clerks or Other clerical support workers, to display the corresponding values in the interactive table.

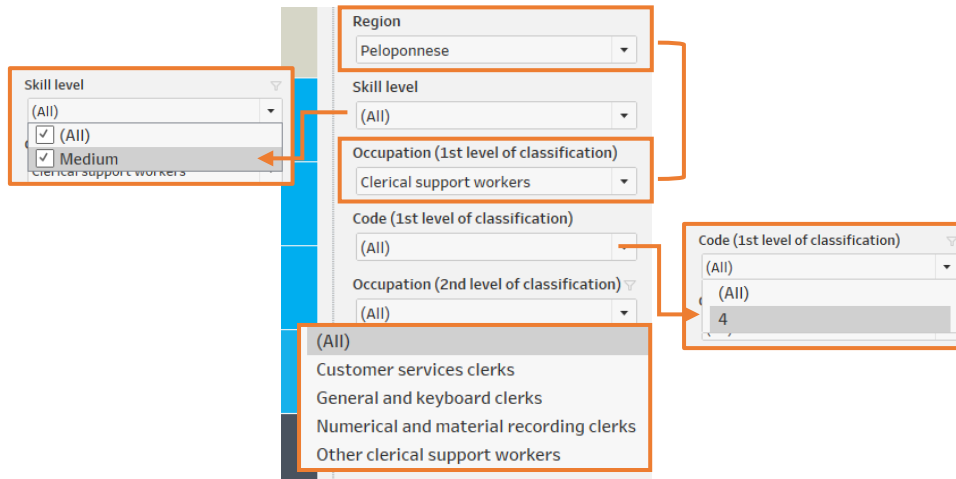


Figure 19. Combined use of filters


In each filter, the user can choose which values to include and which to exclude using the icon  that appears when we place the cursor in the upper right corner of the filter.



Figure 20. Option to include or exclude filter values


In any case, to de-select a filter, we use the icon that appears  when we place the cursor in the upper right corner of the filter.



Figure 21. Reset filters to their original state



### Highlight field

In addition to filters, a useful tool for locating data in tables of the 1st, 2nd and 3rd level of classification (in some categories of data, e.g., ELSTAT) where the data are accessed with the help of the scroll bar, is the **highlight field**. The user selects from a pop-up list in the corresponding field the occupation/sector or code he wants to examine and locates the data of his choice in the yellow highlighted table while the rest of the reports are highlighted. To reset the table, the user selects  on the right side of the field.

**Highlight occupation**  
Highlight Occupation (3rd level of classification)

**Highlight code**  
Highlight Code (3rd level of classification)

**Highlight occupation**  
Highlight Occupation (3rd level of classification)

- Administration professionals
- Administrative and specialised secretaries
- Agricultural, forestry and fishery labourers**
- Animal producers
- Architects, planners, surveyors and designers
- Artistic, cultural and culinary associate professionals
- Assemblers
- Authors, journalists and linguists
- Blacksmiths, toolmakers and related trades workers
- Building and housekeeping supervisors
- Building finishers and related trades workers
- Building frame and related trades workers
- Business services agents
- Business services and administration managers

**Persons employed by occupation (3rd level of classification)**

Code (3rd level of classification)	Occupation (3rd level of classification)	2015	2016	2017	2018	2019	2020	2021	2022
941	Food preparation assistants	16.171	17.570	14.921	25.366	24.250	19.490	30.697	34.227
932	Manufacturing labourers	25.953	27.711	32.555	33.716	30.406	26.637	30.191	26.993
<b>921</b>	<b>Agricultural, forestry and fishery labourers</b>	<b>30.226</b>	<b>31.814</b>	<b>30.843</b>	<b>32.117</b>	<b>34.586</b>	<b>30.026</b>	<b>29.682</b>	<b>37.062</b>
834	Mobile plant operators	18.684	21.032	24.018	23.298	20.995	22.802	26.851	24.422
524	Other sales workers	28.705	24.139	25.433	27.835	28.731	25.220	28.304	40.424
242	Administration professionals	24.408	26.779	21.125	18.122	16.984	34.425	27.190	20.433
334	Administrative and specialised secretaries	38.914	36.616	34.732	36.218	41.766	40.966	26.824	25.966
216	Architects, planners, surveyors and designers	15.776	19.915	20.245	24.703	22.129	22.428	26.228	24.985

**Specify the analysis**

**Highlight occupation**  
Agricultural, forestry and fishery labourers x

**Highlight code**  
Highlight Code (3rd level of classification)

Region: (All)

Skill level: (All)

Occupation (1st level of classification): (All)

Code (1st level of classification): (All)

Occupation (2nd level of classification): (All)

Code (2nd level of classification): (All)

Percentage (%) of change: -20,0% to 20,0%

**Download data**

Metadata Back




**Highlight occupation**  
Agricultural, forestry and fishery labourers x

Figure 22. Highlight field



## Main functions of interactive tables

### Classification of data

The data in the tables are sorted by the most recent reporting year, displaying values in descending order . However, the user can change the sort order to ascending order , choose a different reporting year, sort the data alphabetical  or in the order of the source file, by code or occupation, etc.

Code (3rd level of classification)	Occupation (3rd level of classification)	2015	2016	2017	2018	2019	2020	2021
Total		3,610,693	3,673,559 1.7%	3,752,674 2.2%	3,828,021 2.0%	3,911,030 2.2%	3,875,479 -0.9%	3,927,980 1.4%
522	Shop salespersons	399,240	409,289 2.5%	407,984 -0.3%	403,461 -1.1%	405,065 0.4%	413,905 2.2%	404,511 -2.3%
611	Market gardeners and crop growers	330,480	312,590 -5.4%	313,475 0.3%	326,073 4.0%	308,559 -5.4%	282,199 -8.5%	289,365 2.5%
411		138,459	153,739 11.0%	173,387 12.8%	179,848 3.7%	196,243 9.1%	208,163 6.1%	233,766 12.3%

Code (1st level of classification)	Occupation (1st level of classification)
Total	
5	

- Data source order
- Alphabetic
- Field
- Nested

Figure 23. Data sorting options

### Multiple data selection

An additional essential feature available in the individual tables of the dashboards is the possibility of multiple data selections through the combined use of the *Ctrl* key and the *left button* of the mouse.

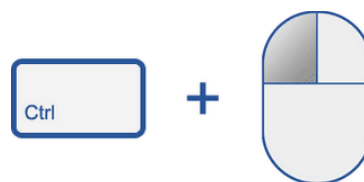


Figure 24. Option to multi-select data (Shortcut)



### Popup bar of options

By choosing one or more data from a table, map or graph, the user can keep it (Keep only) or exclude it (Exclude) from the analysis, change the classification or group them. In addition, it locates information about the selected data and the values of the specific reports.

2	Professionals	669,819	706,070 5.7%	729,227 5.0%	737,132 1.1%	752,675 2.1%	761,227 3.8%	824,200 8.3%
4	Clerical support workers	378,062	382,844 1.3%	399,597 4.4%	413,230 3.4%	449,437 8.8%	453,055 0.8%	455,333 0.5%
6	Skilled agricultural, fore					410,486 -5.4%	375,399 -8.5%	414,622 10.4%
7	Craft and related trades					357,699 1.1%	344,087 -3.8%	368,623 7.1%
3	Technicians and associat					312,079 2.7%	330,654 6.0%	399,079 4.3%
9	Elementary occupations	256,884	256,924 0.0%	270,985 5.3%	261,684 -3.4%	274,070 4.7%	250,312 -8.2%	256,756 2.6%

Keep Only     Exclude   

21 items selected · SUM(Persons employed): 8,311,906

Clerical support workers

Figure 25. Pop up bar of options

### Tooltip

A handy tool of Tableau is the **Tooltip**, which allows the user, by placing the mouse pointer over a value, to immediately see information about all the variables of the specific report.


258 218.1%	180 -30.3%	74 -59.0%	379 413.2%	261 -31.1%	133 -48.9%
355 3.7%	<div data-bbox="411 1305 1327 1512" style="border: 1px solid orange; padding: 5px;"> <p>Year: 2016</p> <p>Region: Western Macedonia</p> <p>Skill level: High</p> <p>Code (3rd level of classification): 132</p> <p>Occupation (3rd level of classification): Manufacturing, mining, construction, and distribution managers</p> <p>Persons employed: 258</p> <p>Percentage (%) of change: 218.1%</p> </div>				
0					

Figure 26. Tooltip



## Additional functions

### Color chart Legend

The color chart legend (legend) presents in some interactive tables the color gradation of the percentage change, while in other cases when the Highlight symbol  is active, it is possible to select a color value of the legend and simultaneously display it on the graph.

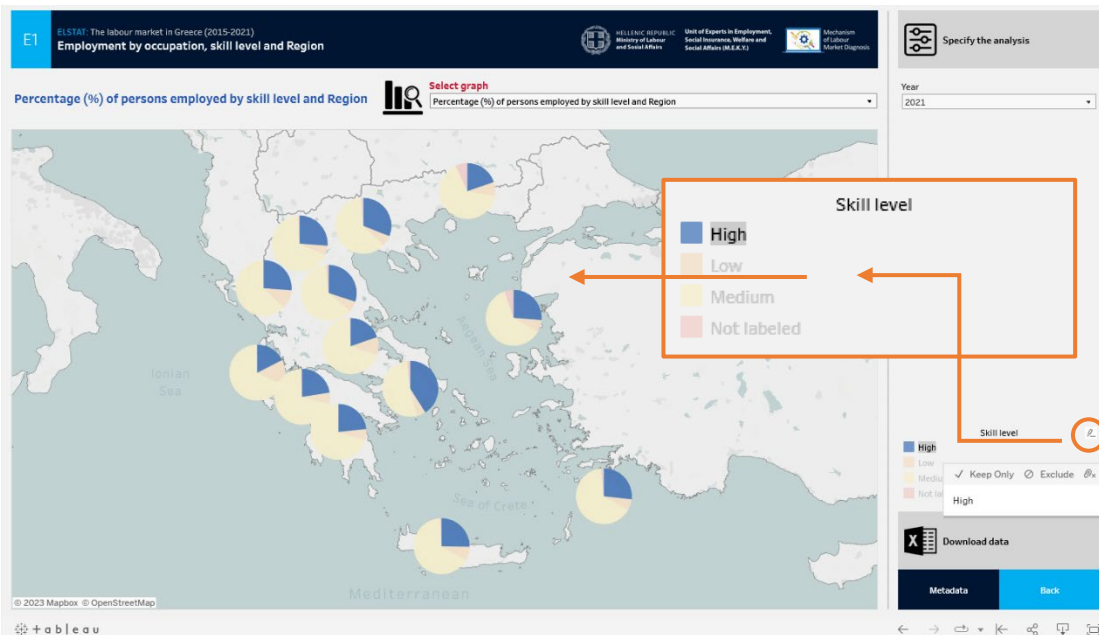


Figure 27. Color chart legend (legend)

### Download Excel file

By selecting **Download data**, the user can download the Excel file with the data of the interactive table through an electronic link.

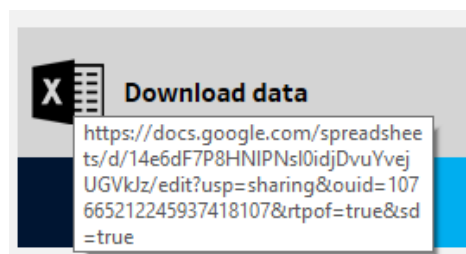


Figure 28. Download Excel file



## Metadata

The **Metadata** pop-up menu provides relevant information about the data source, encoding, publication frequency and last update time.

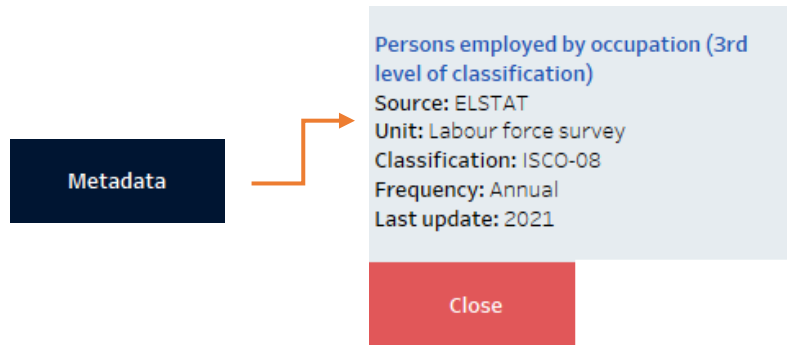


Figure 29. Metadata pop-up menu

## Back



The **Back** (to previous menu) option is available in the Tableau Server edition. It is available during the unified presentation of the thematic sections of all Mechanism of Labour Market Diagnosis dashboards.

Figure 30. Back (to previous menu)

## Tableau Options Bar

After editing the respective dashboard, users can choose from the options bar at the bottom-right of each interactive table: **Undo**, **Redo**, **Reset**, **Share**, **Download** and **Fullscreen**.

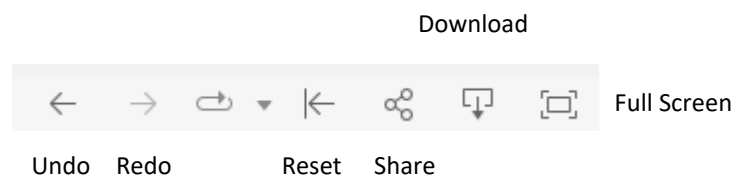


Figure 31. Options bar Tableau



By selecting **Share**, a pop-up window appears that allows, among other things, to copy the link (Link) and embed code (Embed Code) in the current view (Current View) or the original (Original View).



Figure 32. Share pop-up window (Share) dashboard

The dashboard data can be obtained through the **Download** option in the following formats: **Image** (.png image file), **PDF** file and **PowerPoint** file.

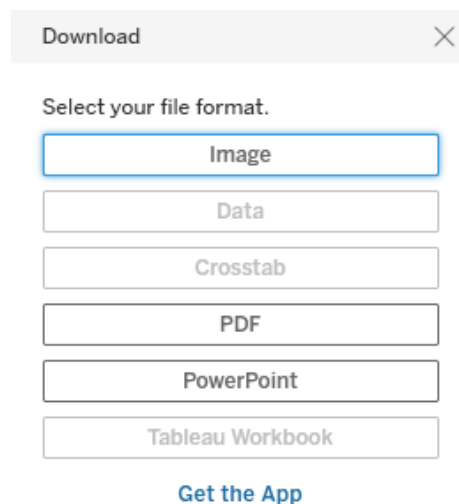


Figure 33. Download pop-up window (Download)



Interactive table overview:

**e3. Unemployment by previous occupation and level of education**

Dashboard link:

<https://mdaae.gr/en/data/i-statistiki-anergia-ana-epangelma-kai-ekpaideftiko-epipedo/>

Source: ELSTAT

**Persons unemployed by level of education**

In this dashboard, users can analyze the persons unemployed by level of education for the years 2015-2022 and their percentage change per year (tooltip).

In addition, they can specialize the classification by selecting, in combination, from the filter area: skill level, occupation or occupation code in one-digit and two-digit classification (ISCO-08 Classification).

In the central part of the interactive table, the estimations of the persons unemployed are displayed in table form, while in the legend on the right, below the filters, the color gradation of the percentage change of the persons unemployed is displayed.

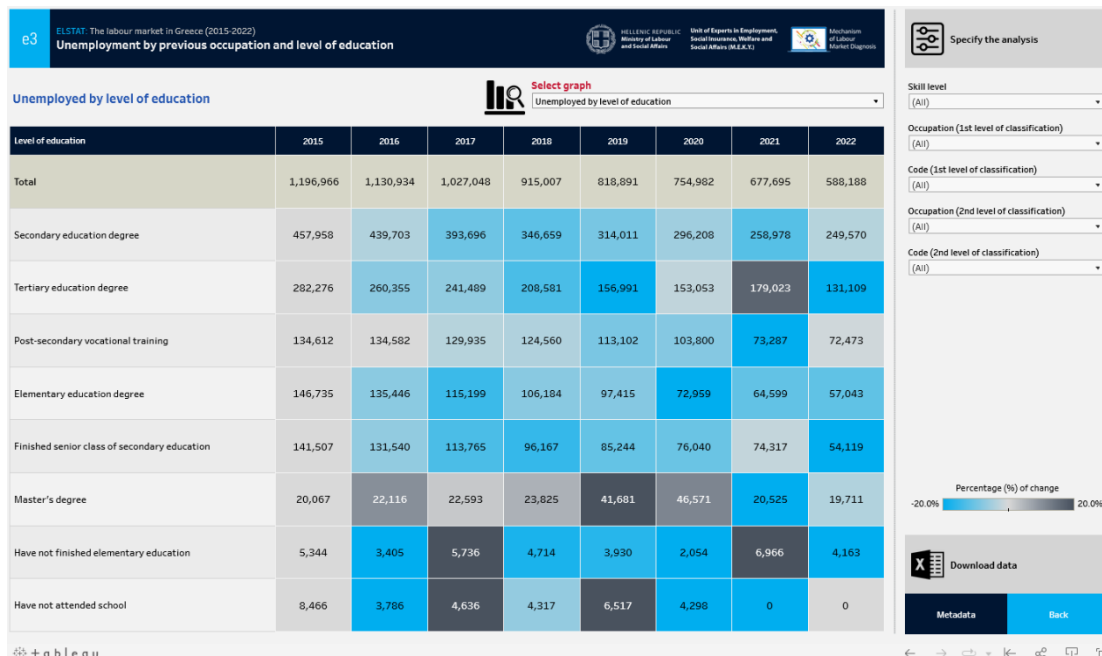


Figure 34. Persons unemployed by level of education



## Persons unemployed by year

This dashboard displays the number of persons unemployed and their yearly percentage change (tooltip) from 2015 to 2022.

For further data analysis, users can choose from the filter area in combination: level of education, skill level, occupation or occupation code at the 1st and 2nd level of classification (ISCO-08 Classification), specializing in the data classification.

In the central part of the interactive table, the estimations of the persons unemployed are displayed in histogram format, while in the legend on the right, below the filters, the color gradation of the percentage change of the persons unemployed is displayed.

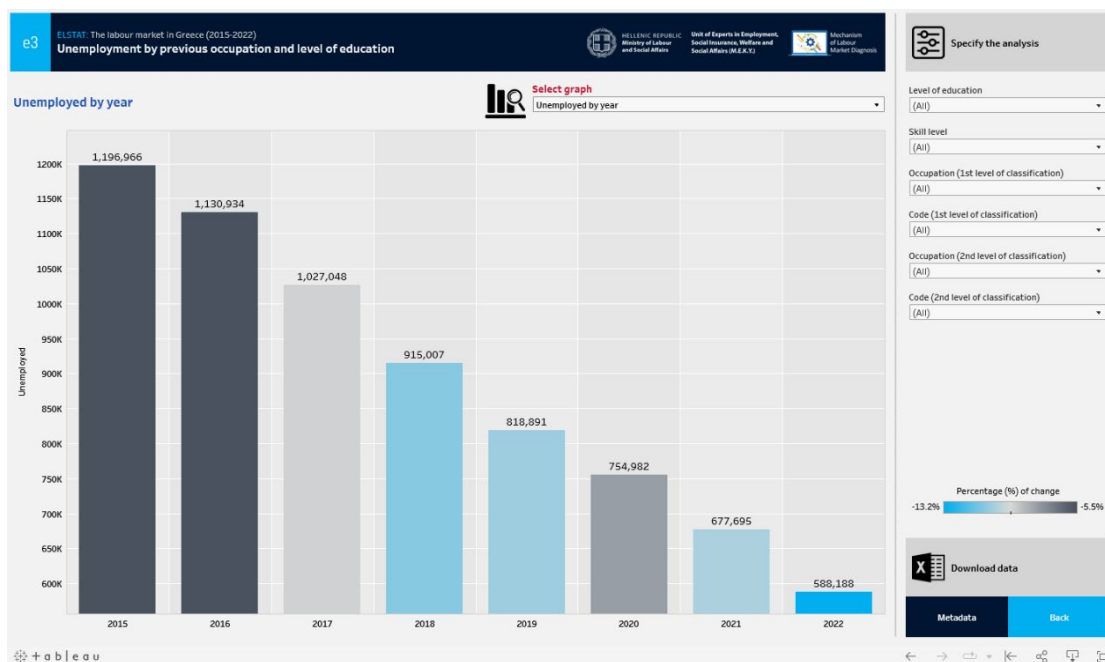


Figure 35. Persons unemployed by year



## Persons unemployed by previous occupation (1st level of classification) and level of education

This dashboard shows the persons unemployed by previous occupation in single-digit classification (ISCO-08 Classification) and level of education for the years 2015-2022, as well as their percentage change per year (tooltip).

In addition, users can specialize the classification by level of education and skill level.

In the central part of the interactive table, the estimations of the persons unemployed are displayed in table form, while in the legend on the right, below the filters, the color gradation of the percentage change of the persons unemployed is displayed.

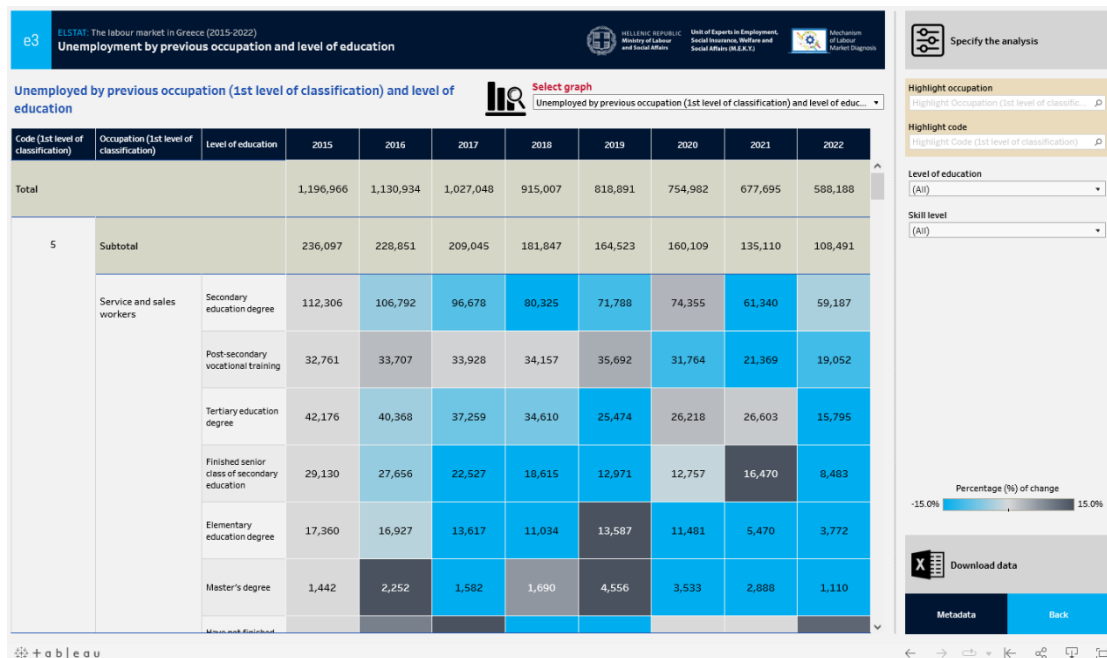


Figure 36. Persons unemployed by previous occupation (1st level of classification) and level of education



### Persons unemployed by previous occupation (2nd level of classification) and level of education

This dashboard displays the persons unemployed by previous occupation in a two-digit classification (ISCO-08 Classification) and level of education for the years 2015-2022, as well as their percentage change per year (tooltip). In addition, users can specialize the classification by level of education, occupation and occupation code (1st level of classification).

By selecting from the filter area an occupation or single-digit classification occupation code, the table displays all relevant sectors in groups at 2nd level of classification.

In the central part of the interactive table, the estimations of the persons unemployed are displayed in table form, while in the legend on the right, below the filters, the color gradation of the percentage change of the persons unemployed is displayed.

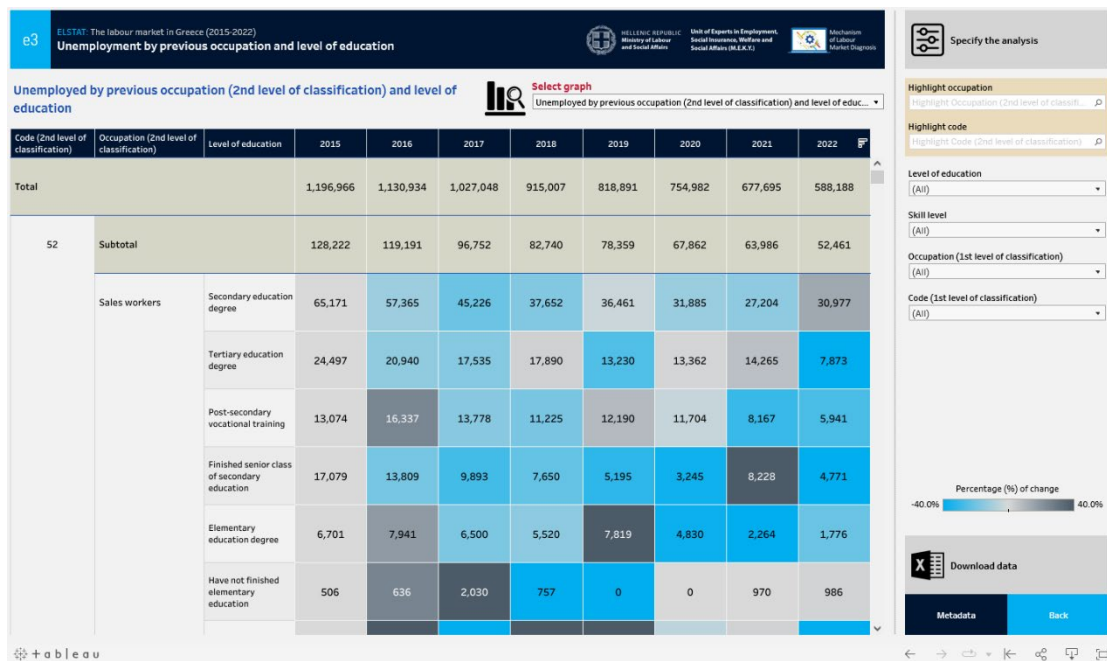


Figure 37. Persons unemployed by previous occupation (2nd level of classification) and level of education



### Percentage (%) of persons unemployed by year and level of education

This dashboard displays the percentage (%) of persons unemployed per year (2015-2022) and level of education. In addition, users can specialize the classification by level of education, occupation and occupation code at 1st and 2nd level of classification (ISCO-08 Classification).

In the central part of the interactive table, the estimates of the persons unemployed for each educational level and year are displayed in axonometric graphs. In more detail, the left part of the vertical axis shows the absolute number of the persons unemployed and their percentage change per year (tooltip), while the right part shows the percentage (%) of the persons unemployed by educational level.

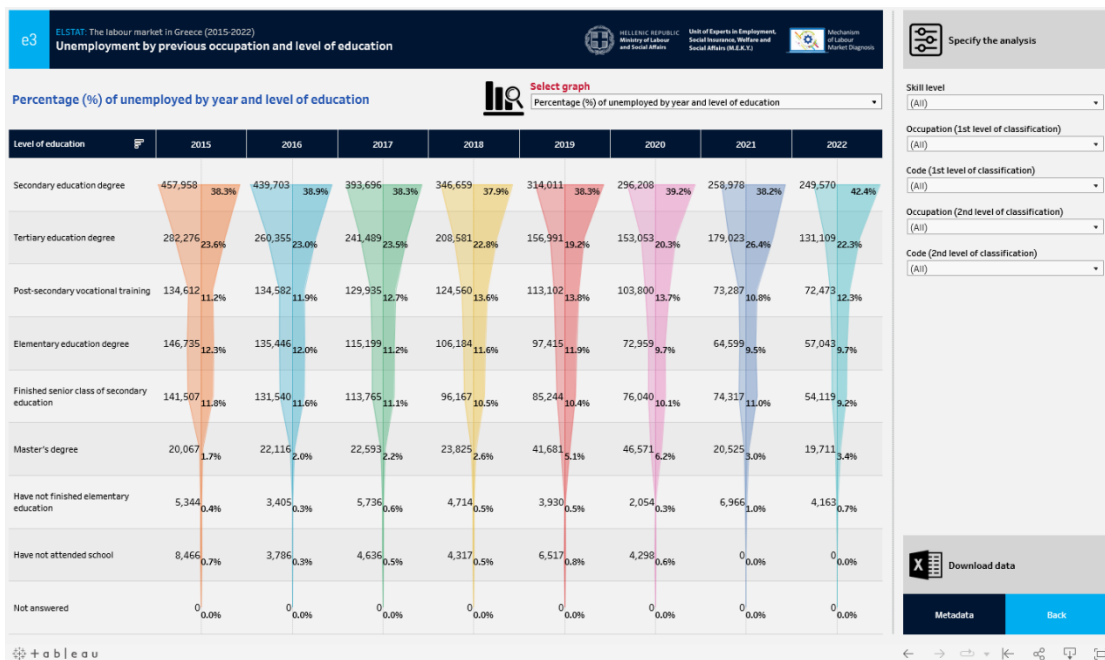


Figure 38. Percentage (%) of persons unemployed by year and level of education